



# VERMONT AGRICULTURE & ENVIRONMENTAL LABORATORY

LEGISLATIVE  
PRESENTATION  
2019 LEGISLATIVE SESSION

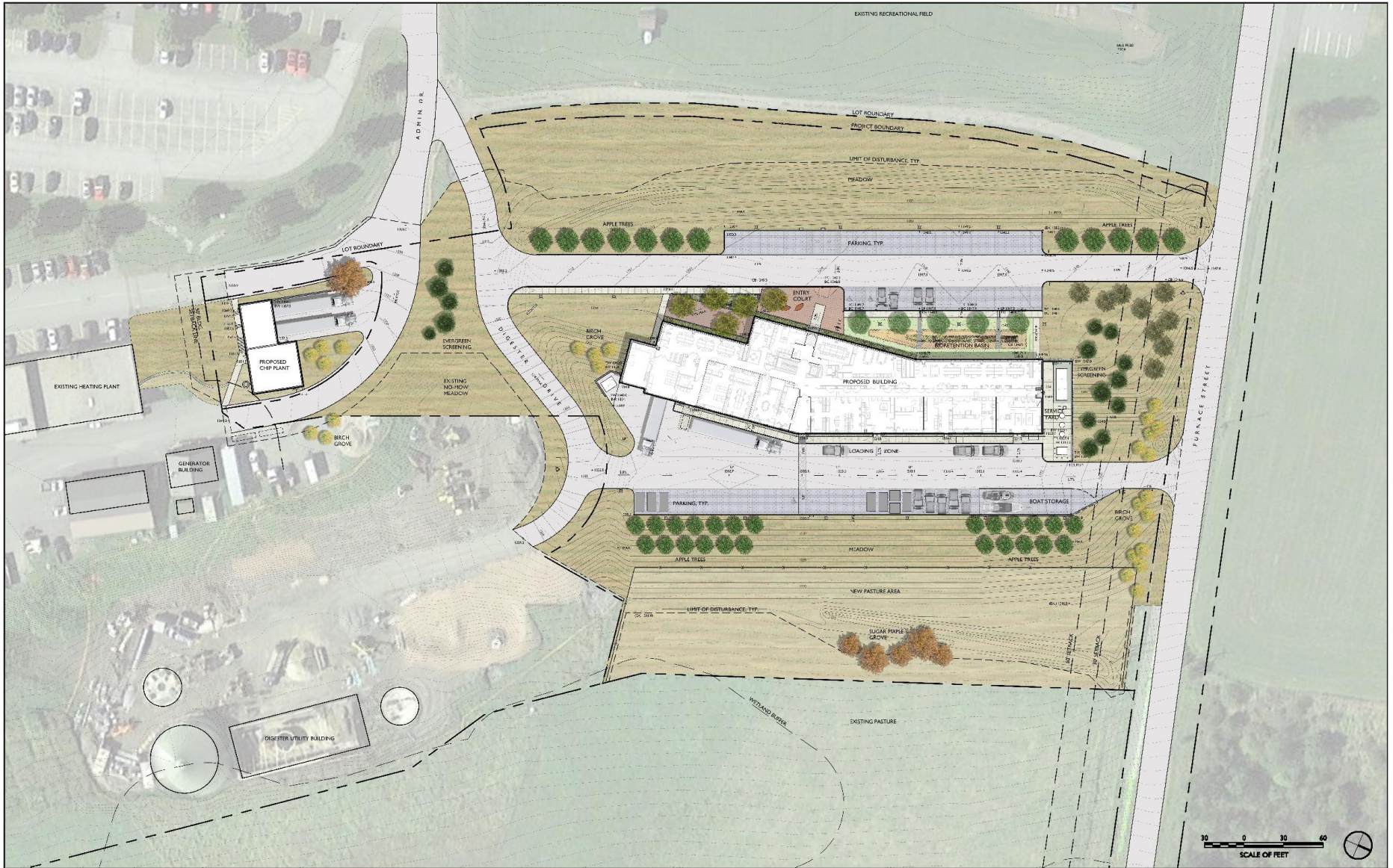






**Site Location: North edge of VTC's campus**









VERMONT  
AGRICULTURAL AND  
ENVIRONMENTAL  
LABORATORY

163 ADMIN DRIVE  
RANDOLPH CENTER, VERMONT 05061

**CANNODESIGN**

**vhb**  
**WAGNERHODGSON**  
LANDSCAPE ARCHITECTURE

CANNODESIGN  
Architectural Firm #0017  
68 Summit Street, Suite 600  
Boston, MA 02110

STATE OF VERMONT DEPARTMENT OF  
BUILDING & GENERAL SERVICES  
Chief Designer  
200 Water Street  
Montpelier, VT 05633-3001

VERMONT STATE COLLEGE  
Landscape Architect  
100 College  
Rutland, VT 05701

VERMONT FRENCH FARMER  
Architectural Firm  
1 Main Street  
Burlington, VT 05401

KNIGHT CONSULTING ENGINEERS  
Geotechnical Engineer  
11 Grand Lane  
Wilton, VT 05495

HYDRO ENGINEERS  
Hydro Consultant  
101 Lamoine Circle, 303  
Rutland, MA 05701

WAGNERHODGSON  
Landscape Architect  
17 Grand Avenue  
Burlington, VT 05401

VANARSE LANDSCAPE ARCHITECTS  
200 S. State  
North Ferrisburgh, VT 05473

KRESS & LANSING ENGINEERS  
64 Water  
Colchester, VT 05446

VERMONT LENS CONSULTING  
475 Acadia Avenue, 4th Floor  
Boston, MA 02115

ACT 250 PERMITTING SET  
JULY 06, 2016

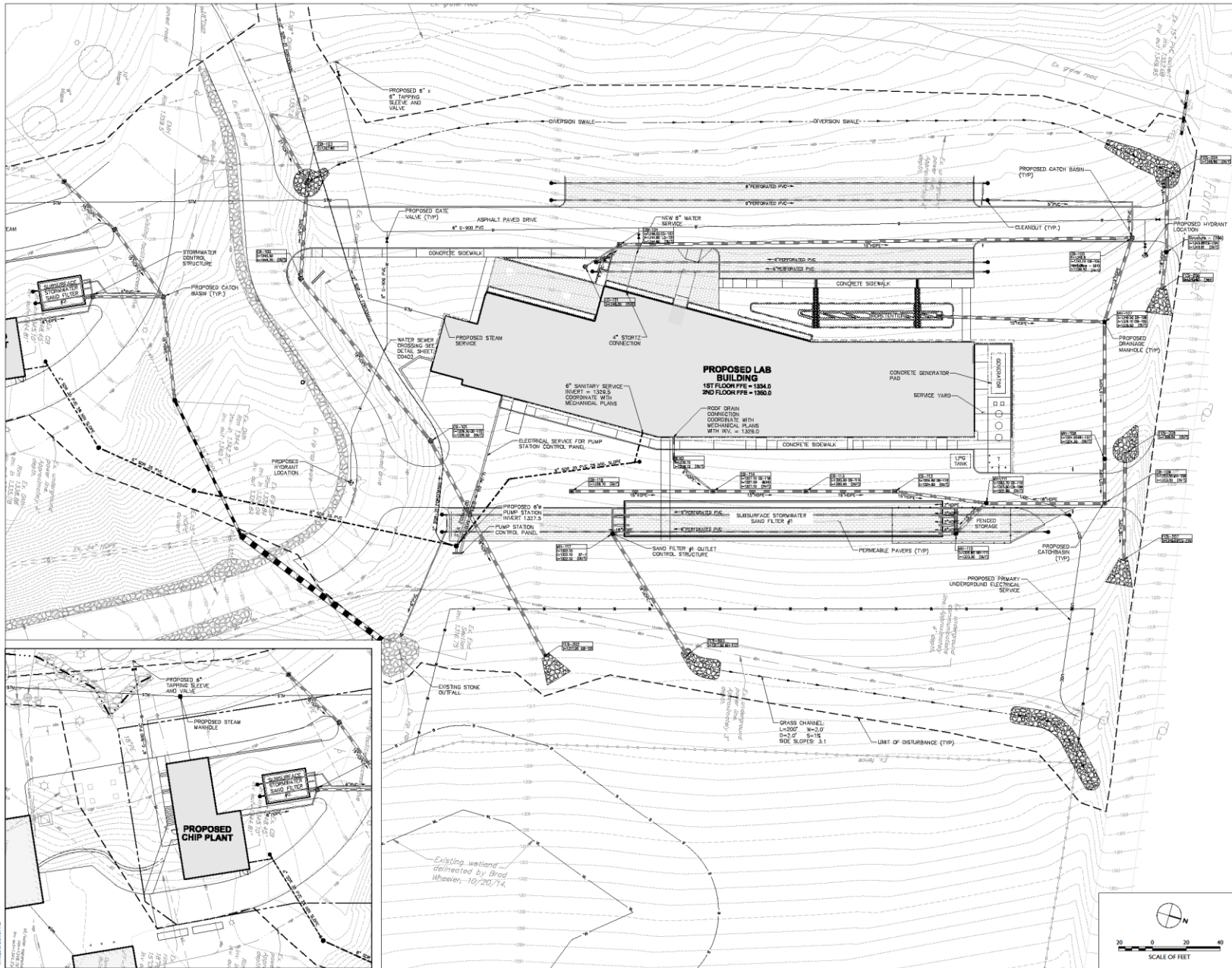
3 Design Development 22 APRIL 2016  
2 IGS Design Development 08 MARCH 2016  
1 Schematic Design 29 MAY 2015



Drawing Title:  
**UTILITY PLAN  
(1 OF 2)**

Scale: Issue Date: 07/06/2016  
Project No.: 09814-03 Checked by:

**C0301**



© Cannon Design 2015  
 All rights reserved. No part of this document may be reproduced without written permission from Cannon Design.  
 4/20/2015 3:15:01 PM



VERMONT  
AGRICULTURAL AND  
ENVIRONMENTAL  
LABORATORY  
163 ADAMS DRIVE  
RANDOLPH CENTER, VERMONT 05081

**CANNONDESIGN**



**WAGNER HODGSON**  
LANDSCAPE ARCHITECTURE

- CANNONDESIGN  
Architectural Firm #00107  
60 Summer Street, Suite 500  
Boston, MA 02110
- STATE OF VERMONT DEPARTMENT OF  
BUILDINGS & GENERAL SERVICES  
Chief  
2 Dummer Street  
Montpelier, VT 05633-3001
- VERMONT STATE COLLEGE  
Landscape  
675 Colgate  
Randolph Center, VT 05081
- FREEMAN FRENCH FREEMAN  
Architectural Associates  
15 Main Street  
Burlington, VT 05401
- KIGHT CORNELL TRENTHAM  
Geotechnical Engineer  
11 Knoll Drive  
Williston, VT 05495
- HYNE ENGINEERS  
1015 Commercial  
101 Ligonier Circle, #203  
Rochester, MA 02081
- WAGNER HODGSON  
Landscape Architect  
100 North Street  
Burlington, VT 05401
- YAMASSEE LANDSCAPE ARCHITECTS  
100 N. State  
North Ferrisburgh, VT 05473
- KRESS & LAMOND ENGINEERS  
Architect  
Caldwells, VT 05448
- VERMONT LENS CONSULTING  
415 North Ferrisburgh  
Boston, MA 02110

ACT 250 PERMITTING SET  
JULY 06, 2016

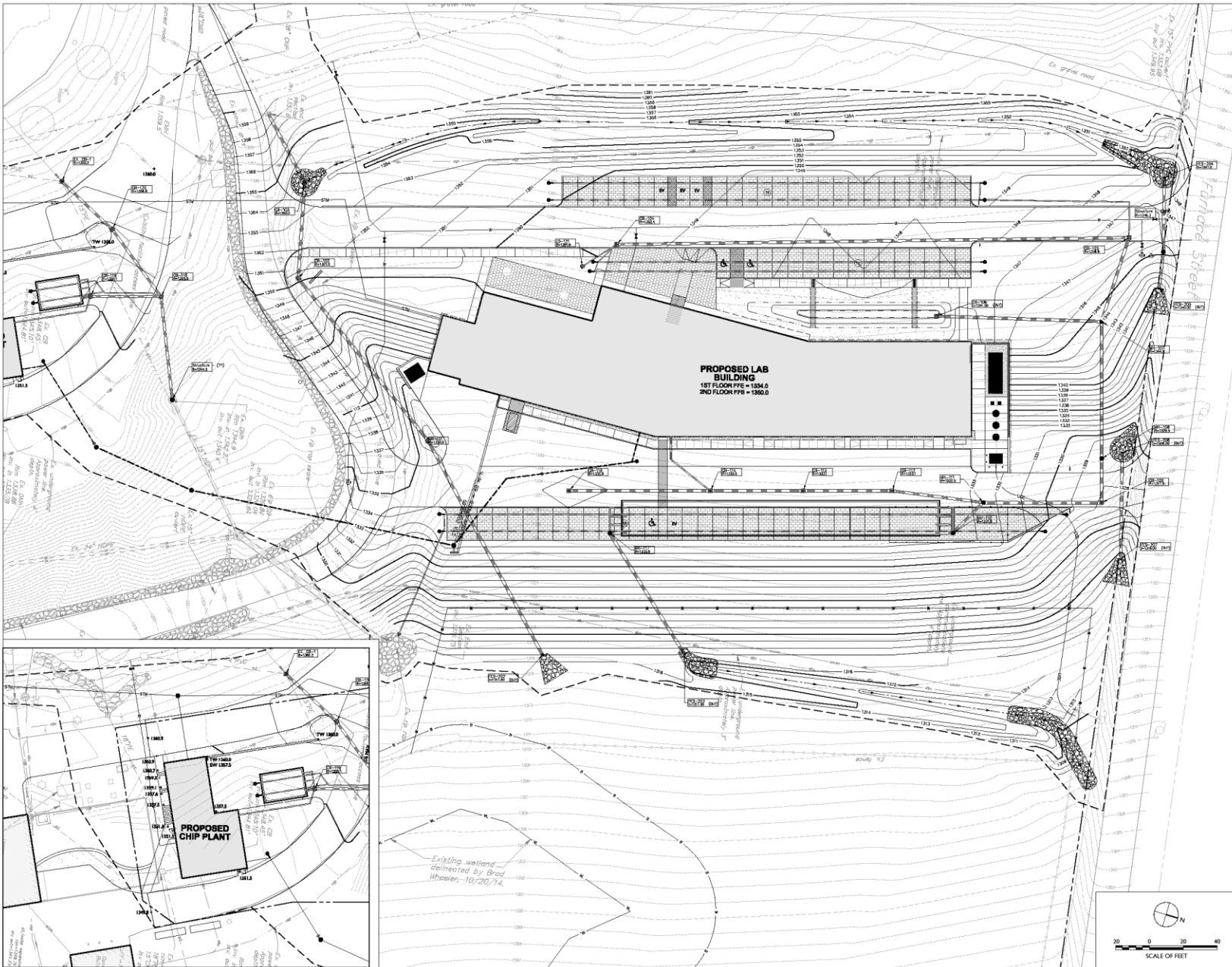
- |     |                         |               |
|-----|-------------------------|---------------|
| 3   | Design Development      | 22 APRIL 2016 |
| 2   | SIS, Design Development | 08 MARCH 2016 |
| 1   | Schematic Design        | 20 MAY 2015   |
| No. | Revision                | Date          |



**GRADING AND DRAINAGE PLAN**

Scale: Issue Date: 07/06/2016  
Project No.: 09814-03 Checked by:

**C0201**



© Cannon Design 2015  
All rights reserved. No part of this document may be reproduced without written permission from Cannon Design.





ffv | f | v | f

CANNONDESIGN  
Architecture/Planning/MEP/FP  
20 Sawyer Street, Suite 100  
Boston, MA 02110

STATE OF VERMONT  
BUILDING & GENERAL SERVICES  
Department

2 Governor Allen Avenue  
Montpelier, VT 05610-2001

FREEMAN FRENCH FREEMAN  
Architects  
31 Main Street  
Burlington, VT 05401

KNIGHT CONSULTING ENGINEERS  
Environmental  
31 Knight Lane  
Winooski, VT 05410

HOME ENGINEERS  
Civil/Structural  
181 Longfellow Circle, Suite 203  
Rutland, MA 05701

WAGNER HOOKSON  
Structural/Architect  
Rural Route  
Burlington, VT 05401

YANASE HANSEN BRISTLIN  
Civil/Structural  
100 Commercial  
North Ferrisburgh, VT 05473

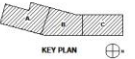
KRESS & LAMOND ENGINEERS  
MECHANICAL  
Colchester, VT 05445

VERMONTLAND CONSULTING  
Civil/Structural  
410 North Ferrisburgh, near  
Burlington, MA 05210

DESIGN DEVELOPMENT  
PROGRESS SET  
MARCH 08, 2016

3	Design Development	28 APRIL 2016
2	SD/Design Development	08 MARCH 2016
1	Schematic Design	20 MARCH 2015

No.	Description	Date



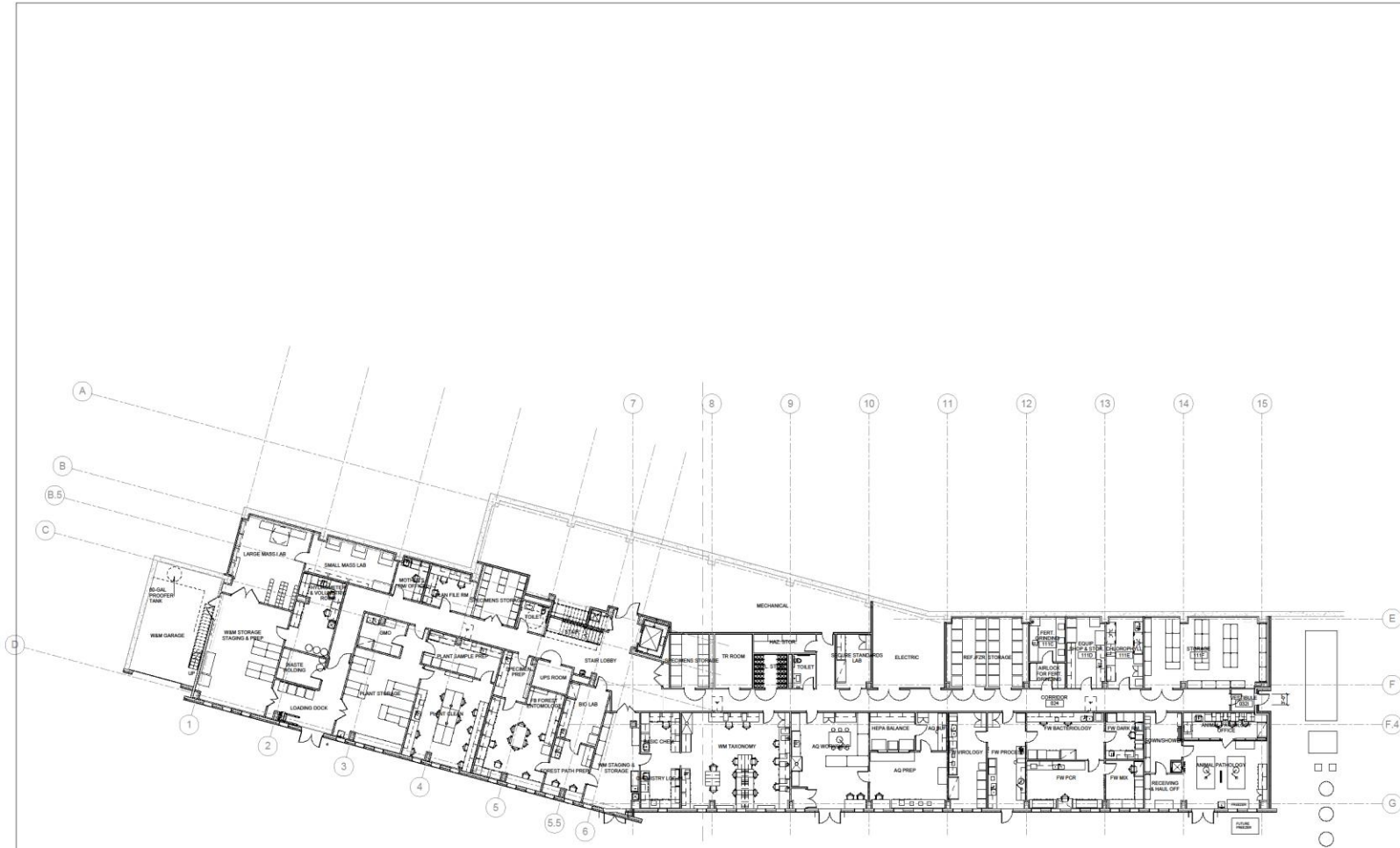
Drawing Title:

LEVEL 01 FLOOR PLAN

Scale: AS NOTED Issue Date: 06/26/2015  
Project No.: 004614.00 Checked by: RVI

**A 001**

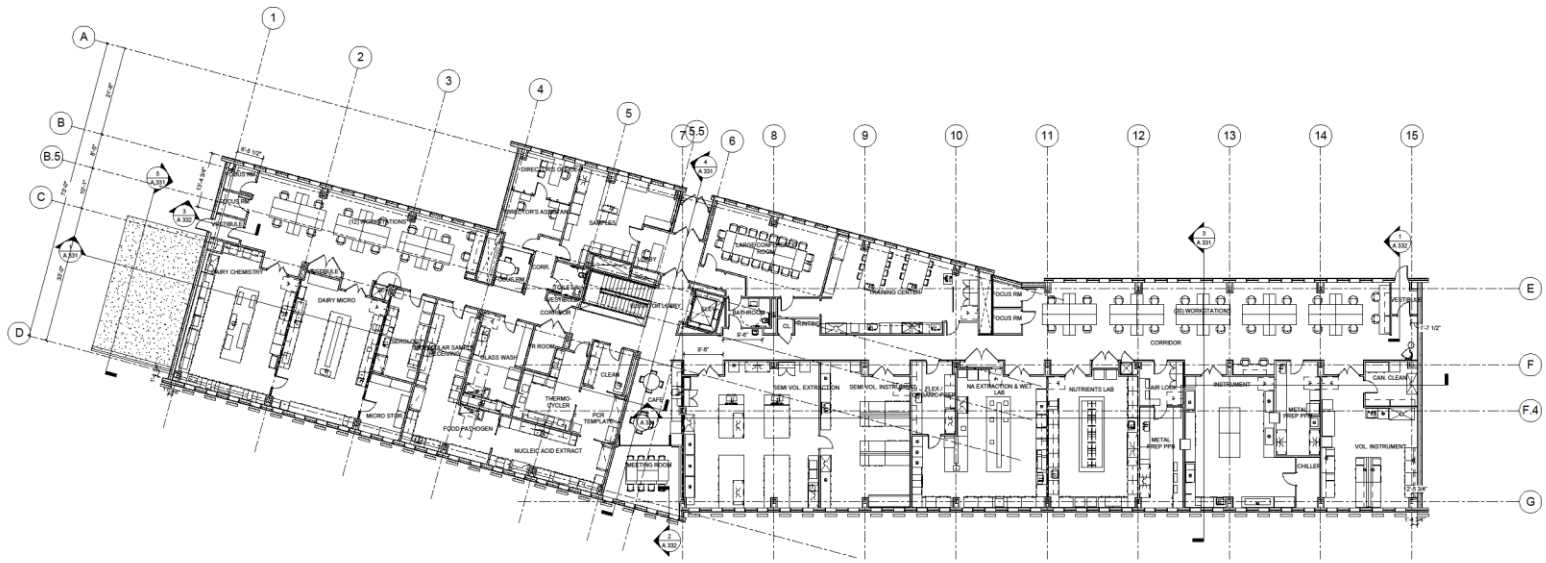
© Cannon Design 2015



1 FIRST FLOOR PLAN  
SEC 1-16

© Cannon Design 2015  
 30000 14.4 02.01 PM

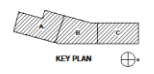
- CANNONDESIGN  
Architectural Firm/M/PEP  
68 Sumner Street, Suite 400  
Burlington, VT 05401
- STATE OF VERMONT  
BUILDING & GENERAL SERVICES  
101
- FREEMAN FRENCH FREEMAN  
Architects  
81 Maple Street  
Burlington, VT 05401
- KNIGHT CONSULTING ENGINEERS  
Mechanical/Electrical  
11 Knight Lane  
Windsor, VT 05495
- HOME ENGINEERS  
Civil/Structural  
101 Longwater Circle, Suite 203  
Roxbury, MA 01969
- WARNER HODGSON  
Landscape Architects  
7 Maple Avenue  
Burlington, VT 05401
- VANASSE HANGEN BRUSTLIN  
Civil Engineer  
1000 U.S. Street  
North Ferrisburgh, VT 05473
- KREBS & LAMING ENGINEERS  
Surveying  
84 Main Street  
Colchester, VT 05445
- VERMONTLINS CONSULTING  
Civil Engineering  
410 Adams Avenue, 2nd Floor  
Burlington, VT 05401



1 SECOND FLOOR PLAN  
3/22/16

DESIGN DEVELOPMENT  
PROGRESS SET  
MARCH 08, 2016

3	Design Development	28 APRIL 2016
2	50% Design Development	08 MARCH 2016
1	Schematic Design	23 MAY 2015



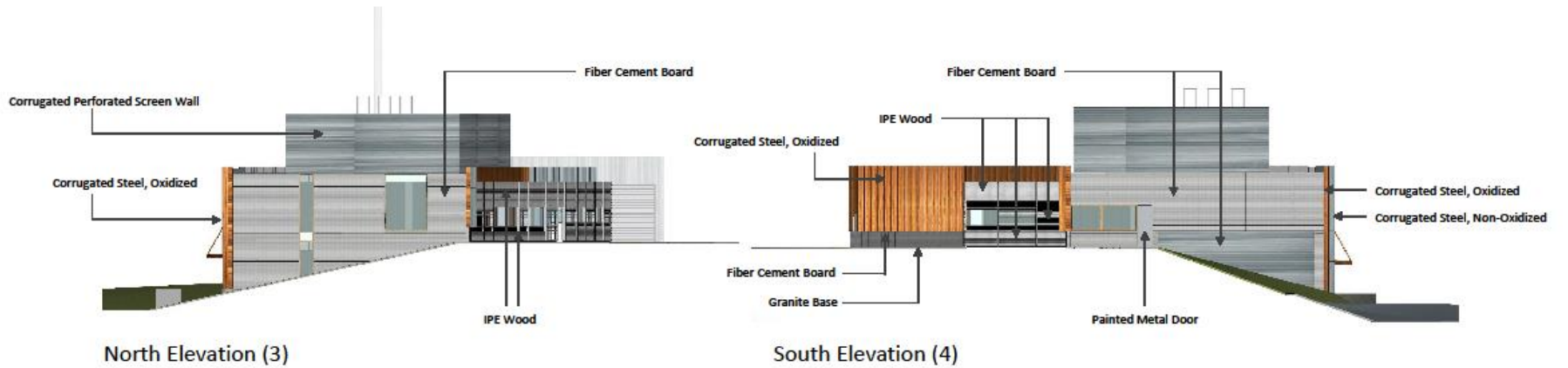
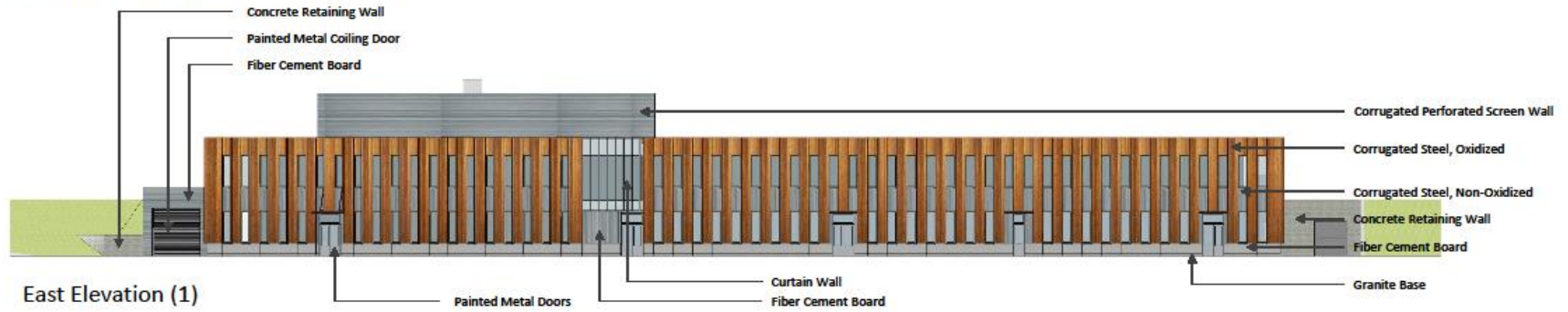
LEVEL 02 FLOOR PLAN

Scale:	AS NOTED	Issue Date:	05/26/2016
Project No.:	06614-02	Checked By:	RF

A 101

© Cannon Design 2015  
 All rights reserved. No part of this document may be reproduced without written permission from Cannon Design.  
 1000114-102-00-00

Building Elevations – Attachment No. VAEL SI 5.1





# Where we are now:

- Permits
- Construction
- Occupancy



**From Entry Looking North** 10





Lower Level Looking North 11





**View of Office/Entry**





**View of Open Office South** 13





